

City of Green Cove Springs

Approved Materials

TABLE OF CONTENTS

WATER SECTION

<u>PAGE:</u>	<u>DESCRIPTION:</u>
W- 1	Ductile Iron Pipe, only with prior approval
W- 2	DR-18 PVC Pipe
W- 3	Steel Casing Pipe
W- 4	Root Barrier
W- 5	SCH80 PVC Pipe
W- 6	Wide Range Coupling
W- 7	Ductile Iron Fittings
W- 8	Transition Coupling
W- 9	Boltless Coupling
W-10	Full Circle Repair Clamp
W-11	Mechanical Joint Accessory Pack
W-12	Stainless Steel Tapping Sleeve, Pressure Only, 4" and larger
W-13	Cast Iron Valve Box and Cover
W-14	Mechanical Joint Retainer Gland for Ductile Iron Pipe
W-15	Mechanical Joint Fasteners
W-16	Joint Restraining Devices
W-17	Flange Adaptor
W-18	Resilient Seated Gate Valve
W-19	Bronze Gate Valve, H.D.
W-20	Fusible Polyvinylchloride Pipe (FPVC)
W-21	Ball Valve, Curb Stop
W-22	Tapping Sleeve, Pressure Only, Stainless Steel, 3/4" to 2"
W-23	Fire Hydrant
W-24	Meter Box or Flushing Hydrant
W-25	Meter Box, 1" Meter
W-26	Meter Box, 1½ and 2" Meters
W-27	SCH80 Solvent Weld Fittings
W-28	Air Release Valve
W-29	Casing Spacer
W-30	Double Detector Check Valve Assembly, Fire System
W-31	Reduced Pressure Backflow Preventer Assembly
W-32	RPZ Backflow Preventor
W-33	Inline Check Valves, Residential
W-34	In Line Check Valve
W-35	Water Meter, Turbine
W-36	Precast Meter Vault for Large Meter
W-37	Ductile Iron One Bolt Fitting
W-38	Mechanical Joint Restrainer Gland
W-39	Resilient Seated Gate Valve – Heavy Duty
W-40	Tracer Wire
W-41	Tracer Wire Box
W-42	Polyethylene Tubing

TABLE OF CONTENTS

WATER SECTION (CONTINUED)

PAGE:	DESCRIPTION:
W-43	Brass Adapter & Coupler
W-44	Service Saddle, Single Strap
W-45	Service Saddle, DoubleStrap

Approved Materials



Note: Push on joint shown as an example only. See plans and specifications for joint type. Must be of domestic origin and must have been cast and machined in the United States.

DESCRIPTION:

Ductile Iron (D.I.) Pipe, cement-lined, ANSI A21.50, AWWA C150, Class 51 minimum ANSI A21.51, AWWA, C151, cement lined as per AWWA C110, C115 and C151. Pipe shall have 60,000 p.s.i. minimum tensile strength and 42,000 p.s.i. minimum yield strength. Marking tape must be used in this material installation. GCS does not permit 3" pipe in the GCS owned and maintained utility system.

SIZE

4" and larger

MANUFACTURER

U.S. Pipe
Clow Water Systems Co.
American Ductile Iron Pipe
Griffin Pipe Products

MODEL #

N/A
N/A
N/A
N/A

Ductile Iron Pipe

REVISION DATE

07/09/18

ITEM

DUCTILE IRON PIPE

PAGE

W-1

City of Green Cove Springs

Approved Materials



DESCRIPTION:

DR-18, (C900) 235 PSI PVC for Fire Mains and Water Distribution Mains 4" thru 24".
DR-25 (C900) 165 PSI for Water Distribution Mains above 24", conforming to ASTM D-1784, D-2241, D-3139 and F-477, color coded blue and marked on at least 2 sides with the word "WATER" and at every 12" along barrel of pipe. Couplings shall be rubber gasketed, push-on type, conforming to ASTM D-2122.

SIZE

4" to 36"

MANUFACTURER

JM Eagle Corporation
North American Pipe Co.
Diamond Plastics Corp.
CertainTeed Corp.
National Pipe & Plastics, Inc.
Sanderson Pipe Corp.

MODEL #

N/A
N/A
N/A
N/A
N/A
N/A

DR-18 PVC Pipe

REVISION DATE

07/09/18

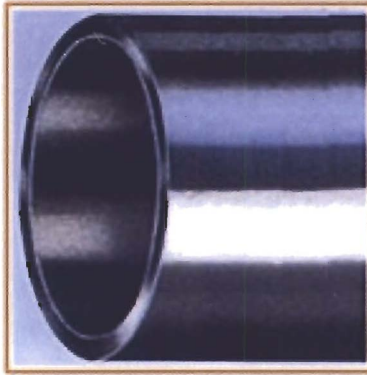
ITEM

DR-18 PVC PIPE

PAGE

W-2

Approved Materials



Note: Must be of domestic origin, and must have been cast and manufactured in the United States.

DESCRIPTION:

Steel Casing Pipe, Wall thickness (as per DOT specifications), ASTM A139, maximum yield strength of 35,000 p.s.i.

SIZE

Varies

MANUFACTURER

N/A

MODEL #

N/A

REVISION DATE

07/09/18

ITEM

STEEL CASING PIPE

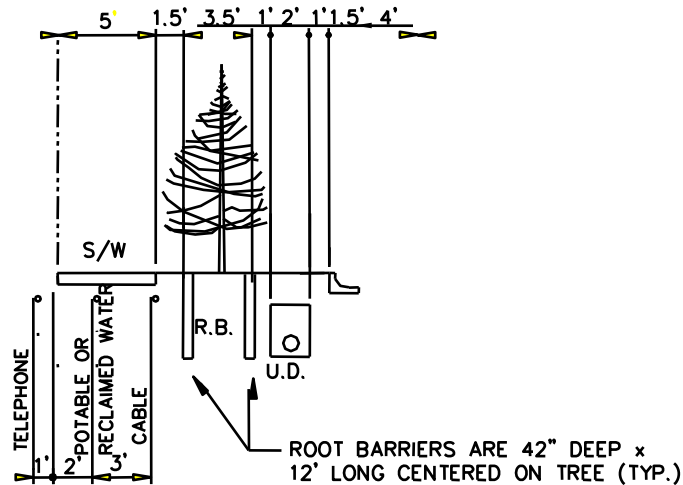
PAGE

W-3

Steel Casing Pipe

City of Green Cove Springs

Approved Materials



DESCRIPTION:

Extruded sheets or panels with integral male/female sliding lock connection ends. Material shall be HDPE with a minimum thickness of 60 mil, and shall be ribbed. Root barrier shall extend to a minimum depth of 42" below finish grade. The root barrier shall be a minimum of 12' long, centered on the tree and parallel to the utility main or service line being protected, unless shown otherwise on the plans. Root barrier shall be installed at any tree planted in a GCS utility easement, or any tree planted within 7.5' of all GCS utility mains or services. No trees shall be planted in a GCS utility easement without the approval of GCS. No trees shall be closer than 5' to any utility line or services.

SIZE
N/A

MANUFACTURER
N/A

MODEL #
N/A

REVISION DATE
07/09/18

ITEM
ROOT BARRIER

PAGE
W-4

Root Barrier

City of Green Cove Springs

Approved Materials



DESCRIPTION:

PVC 1120 Sch80 Pipe Water Service as per ASTM D1785, bell and spigot with marking tape. GCS does not permit 3" pipe in the GCS owned and maintained utility system.

SIZE

2" and smaller

MANUFACTURER

JM Manufacturing Company, Inc.
North American Pipe Co.
National Pipe & Plastics, Inc.
Sanderson Pipe Corp.
Colonial Pipe
Universal 100s Products/Accord Industries
Freedom Plastics, Inc.
Vassallo Industries
Charlotte Pipe and Foundry Co.
IPEX

MODEL #

N/A
N/A
N/A
N/A
N/A
N/A
N/A
N/A
N/A
N/A

SCH80 PVC Pipe

REVISION DATE

07/09/18

ITEM

SCH80 PVC PIPE

PAGE

W-5

City of Green Cove Springs

Approved Materials



DESCRIPTION:

Wide Range Coupling

SIZE

2" thru 12"

MANUFACTURER

Ford Meter Box Company, Inc.
PowerSeal Pipeline Products Corp.
Mueller Company
JCM
Romac
Romac
Romac
TPS

MODEL #

FC2W Ultra-Flex
3506 PowerMax
Max-Range
Coupling Optimum
XR501
Alpha
Macro HP
TX3 Series

City of Green Cove Springs

Approved Materials



NOTE: Mechanical Joint Cross shown as an example only.

DESCRIPTION:

Ductile Iron cement-lined or ceramic epoxy-lined (meeting ANSI/NSF-61) fittings including bends, tees, crosses, reducers, plugs, caps, anchoring tees, sleeves, offsets, wye-branch & true-wye, 350 compact MJ fittings C153/A21.53, Flange fittings C110/A21.10.

SIZE

3" and larger

MANUFACTURER

Union Foundry Corp.
Tyler Pipe (McWane, Inc.)
American Cast Iron Pipe Co.
U.S. Pipe
Star Pipe Products
NAPAC, Inc. Waterworks
NACIP, Inc.
SIP Industries
Sigma

MODEL #

N/A
N/A
N/A
N/A
N/A
N/A
N/A
N/A
N/A

Ductile Iron Fittings

REVISION DATE

07/09/18

ITEM

DUCTILE IRON FITTINGS

PAGE

W-7

City of Green Cove Springs

Approved Materials



Note: O.D. Ranges may vary. Refer to manufacturer's specifications.

DESCRIPTION:

Transition Coupling, cement lined or epoxy lined.

SIZE

4" and larger

MANUFACTURER

Romac Industries, Inc.
Ford Meter Box Company, Inc.
Ford Meter Box Company, Inc.
Smith-Blair, Inc.
Dresser Hymax
PowerSeal Pipeline Products Corp.
PowerSeal Pipeline Products Corp.
Mueller Company
JCM
TPS

MODEL #

501, Macro HP
FC2A
FC2W
441
262
3506-AS
3506
Max-Range Coupling
Optimum Range 242
TX3 Series

REVISION DATE

07/09/18

ITEM

TRANSITION COUPLING

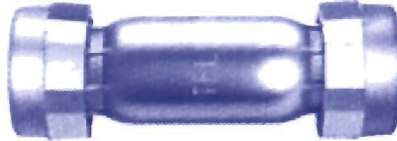
PAGE

W-8

Transition Coupling

City of Green Cove Springs

Approved Materials



DESCRIPTION:

Boltless Coupling (long or short type)

SIZE

1/2" to 2"

MANUFACTURER

Dresser

Telsco

TPS

MODEL #

Style 65

700 Series

600 Series

Boltless Coupling

REVISION DATE

07/09/18

ITEM

BOLTLESS COUPLING

PAGE

W-9

City of Green Cove Springs

Approved Materials



DESCRIPTION:

Full Circle Repair Clamp (Stainless Steel)

SIZE

All Sizes
2" to 12"
10" and larger
All Sizes
2" to 12"
4" to 60"
2" to 12"
All Sizes
All Sizes

MANUFACTURER

Ford Meter Box Company, Inc.
Smith-Blair, Inc.
Smith-Blair, Inc.
Romac Industries, Inc.
JCM Industries, Inc.
JCM Industries, Inc.
Krausz Industries Ltd.
PowerSeal Pipeline Products Corp.
PowerSeal Pipeline Products Corp.
Mueller Company

MODEL #

"F" or "FS" Series
Series 226 or 256
Series 228 or 263
"SS" or "CL" Series
101 or 131
102 or 132
E.Z. Max
3121
3121 AS
Series 500

REVISION DATE

04/03/09

ITEM

FULL CIRCLE REPAIR CLAMP

PAGE

W-10

Full Circle Repair Clamp

City of Green Cove Springs

Approved Materials



Note: Must be of domestic origin and must have been cast and machined in the United States.

DESCRIPTION:

Mechanical Joint Accessory Pack

SIZE

3" and larger

MANUFACTURER

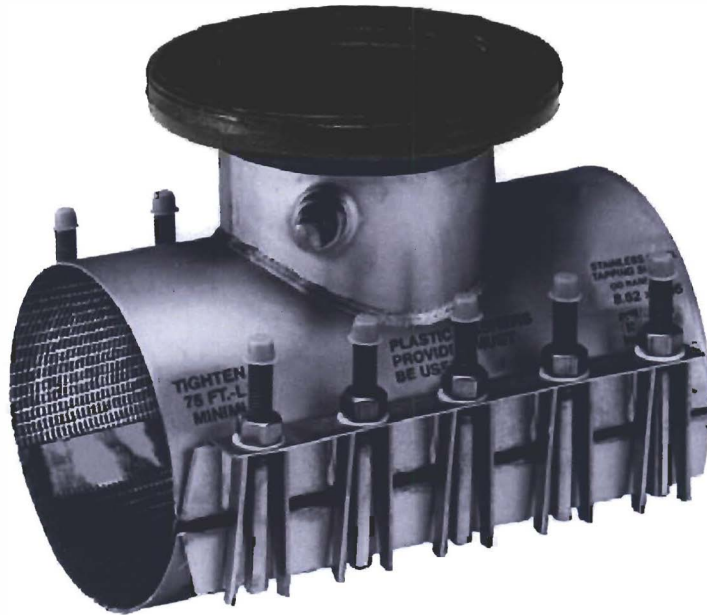
Union Foundry Co. (McWane, Inc.)
Tyler Pipe (McWane, Inc.)
American Ductile Iron Pipe
U. S. Pipe
Star Pipe Products
NAPAC, Inc. Waterworks
Merit Fasteners Corp.

MODEL #

N/A
N/A
N/A
N/A
N/A
N/A
N/A

City of Green Cove Springs

Approved Materials



Note: Must be all Stainless Steel. No dissimilar metals allowed.

DESCRIPTION:

Stainless Steel Tapping Sleeve

SIZE

4" and larger

MANUFACTURER

Ford Meter Box Company, Inc.
Romac Industries, Inc.
Smith Blair, Inc.
Cascade Waterworks Mfg.
Dresser
Mueller Co.
PowerSeal Pipeline Products Corp.

MODEL #

FAST Series
SST
663 & 665
CST-EX
Style 630
H304
3490 MJ

REVISION DATE

07/09/18

ITEM

STAINLESS STEEL TAPPING SLEEVE

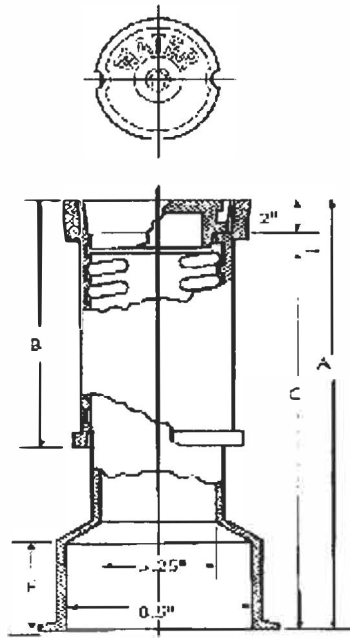
PAGE

W-12

Stainless Steel Tapping Sleeve

City of Green Cove Springs

Approved Materials



Note: Must be of domestic origin and must have been cast and machined in the United States.

DESCRIPTION:

Cast Iron Screwed Valve Box and Cover, shall be non-tacky tar enamel coated, with the word "WATER" cast into the cover.

SIZE
N/A

MANUFACTURER
Tyler Pipe (McWane, Inc.)
U.S. Foundry
Opelika Foundry (Bingham & Taylor)
PCI Fastech
Sigma Corp./Russell

MODEL #
461-S
7500
4905 (size 18)
N/A
N/A

REVISION DATE
07/09/18

ITEM
CAST IRON VALVE BOX & COVER

PAGE
W-13

Cast Iron Valve Box & Cover

City of Green Cove Springs

Approved Materials



Note: For Ductile Iron only.

DESCRIPTION:

Mechanical Joint Retainer Gland for Ductile Iron Pipe

SIZE

4" and larger

MANUFACTURER

Union Foundry Co. (McWane, Inc.)
Tyler Pipe (McWane, Inc.)
American Ductile Iron Pipe
U. S. Pipe
Star Pipe Products
Star Pipe Products
Star Pipe Products (Repairs Only)
Tyler Union
Tyler Union
Tyler Union
Ebaa Iron Inc.
Smith-Blair
Ford Meter Box Company
SIP Industries

MODEL #

N/A
N/A
N/A
N/A
Series 600 MJRGHD
Series 3000
Series 3000S
Series TGD
Series 1000
Series 1500 (Dual Wedge)
Series 1100
CAM-Lock 111
UFR 1400 Dxl
EZDP08

REVISION DATE

07/09/18

ITEM

MECHANICAL JOINT RETAINER

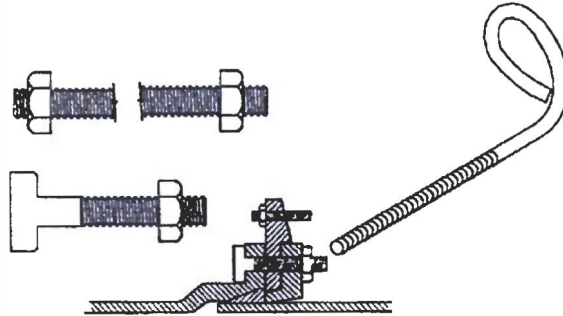
PAGE

W-14

Mechanical Joint Retainer

City of Green Cove Springs

Approved Materials



DESCRIPTION:

Mechanical Joint Fasteners / Tie Lugs

SIZE
3/4"

MANUFACTURER
N/A

MODEL #
N/A

*See specifications for all Thread Rods, Eye Bolts, Nuts and Washers

Mechanical Joint Fasteners

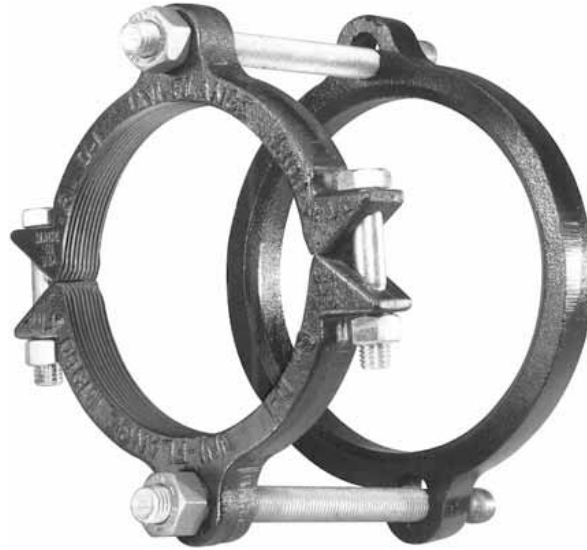
REVISION DATE
07/09/18

ITEM
MECHANICAL JOINT FASTENERS

PAGE
W-15

City of Green Cove Springs

Approved Materials



DESCRIPTION:

PVC Pipe - Joint Restraining Devices.

SIZE

4" and larger

MANUFACTURER

Ford Meter Box Company, Inc.
Ford Meter Box Company, Inc.
Ford Meter Box Company, Inc.
Ebba Iron, Inc.
Star Pipe Products
Star Pipe Products
Sigma Corporation
Ebba Iron
Ebba Iron
Star Pipe

MODEL #

Uni-Flange 1300 series
Uni-Flange 1350 series
Uni-Flange 1390 series
6500 Series
1000 Series
1100 Series
PV-Lok, PVM & PVP Series
Series 6506 P.F./MJ
Series 6506
PVC Stargrip Series 4000G2

REVISION DATE

07/09/18

ITEM

JOINT RESTRAINING DEVICES

PAGE

W-16

Joint Restraining Devices

City of Green Cove Springs

Approved Materials



DESCRIPTION:

Flange Adapters, Ductile Iron Pipe Only.

SIZE

4" and larger

MANUFACTURER

Ford Meter Box Company, Inc.
Ford Meter Box Company, Inc.
Ford Meter Box Company, Inc.
Ebaa Iron, Inc.
Ebaa Iron, Inc.
Star Pipe Products
Star Pipe Products
Sigma

MODEL #

Uni-Flange 200 series
Uni-Flange 400 series
Uni-Flange 900 series
000 Series
3500 Series
200 Series
400 Series
ZF2-ZF4 Series

REVISION DATE

07/09/18

ITEM

FLANGE ADAPTOR

PAGE

W-17

Flange Adaptor

City of Green Cove Springs

Approved Materials



Note: All valves shall open by turning to the left. Mechanical Joint shown as an example only. See specifications for additional joints.

DESCRIPTION:

All gate valves including tapping valves, regardless of size shall be AWWA C-515 D.I.

Note: Any manufacturer who wishes to pour Ductile Iron into the mold of a C-509 type valve, creating a full wall D.I. valve, will be permitted to do so.

All gate valves shall be equipped with the following items: all bolts, nuts, and washers shall be stainless steel 304 or 316 grade, assembled with anti-seize compounds; the wedge shall be ductile iron; all resilient wedge material shall be EPDM rubber with the wedge fully encapsulated in a manner to prevent the rubber from separating from the metal wedge; the entire gate valve shall be fusion-bonded epoxy coated conforming to AWWA C550 and NSF 61 certified; all stems shall be stainless steel, lead free, type 304 through 430 S.S. per ASTM A276; valve shall have a 2" operating nut and open left. All gate valves 10" and larger in size shall have four bolthole slots in the upper quadrant of M.J. Flange, or supplier shall supply equivalent hardware, including eyebolts and properly shaped restraining bolts, to accomplish the same installation, as part of the gate valve cost.

SIZE

4" and larger

MANUFACTURER

American Flow Control
American Flow Control with ALPHA™ Ends
Mueller Company
Mueller Company
M&H Valve Co.
Clow Valve Co.
American AVK Company

MODEL #

2500 Series
2500 Series
2300 Series
A-2361
7000 Series
2638 Series
45 & 55 Series

REVISION DATE

07/09/18

ITEM

RESILIENT SEATED GATE VALVE

PAGE

W-18

Resilient Seated Gate Valve

City of Green Cove Springs

Approved Materials



Note: All valves shall open by turning to the left. Threaded and Union Style bonnets approved.

DESCRIPTION:

Bronze Gate Valve, 150 p.s.i. Class, H.D. Federal Spec. Valves with a wheel handle shall be installed **above ground only**, and shall open to the left.

SIZE

¾" to 2"

MANUFACTURER

Grinnell (threaded bonnet only)
Stockham
Nibco
Hammond

MODEL #

3050
B130 & B131
T-133
1B646 & 1B638

City of Green Cove Springs

Approved Material



DESCRIPTION

Fusible Polyvinylchloride Pipe (PVC) for potable water distribution 4" thru 24". Fusible PVC pipe shall conform to AWWA C900, AWWA C905, ASTM D2241 or ASTM D1785 for standard dimensions, as applicable. Testing shall be in accordance with referenced AWWA standards of all pipe types. Fusible PVC pipe shall be extruded with plain ends. The ends shall be square to the pipe and free of bevel or chamfer. There shall be no bell or gasket of any kind incorporated into the pipe. Fusible PVC pipe shall be manufactured in standard 40' nominal lengths, or customs lengths as specified. Fusible PVC shall be blue in color for potable water use.

Size

4" to 24"

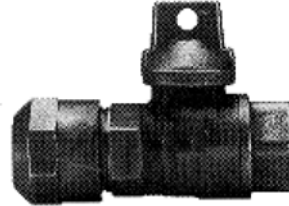
Manufacturer

Underground Solutions Inc.

Item- Fusible Polyvinylchloride Pipe

City of Green Cove Springs

Approved Materials



DESCRIPTION:

Curb stops shall be manufactured from cast bronze with machined fitting surfaces and in accordance with AWWA C800 in sizes 3/4 inch through 2 inches. Curb stop shall be full-port ball valve with check, combined cap and tee, with lock wing cast on stop body and operating tee cap to provide for locking the stop in closed position. Curb stops for use with copper services shall have an inlet connection with a flare nut fitting for Type K copper tubing. Curb stops utilizing poly tubing shall have an inlet connection with a pack joint or compression joint. Curb stops for use with Schedule 80 PVC pipe shall have inlet connections with female iron pipe threads. All curb stops shall have an outlet connection with female iron pipe thread.

SIZE

3/4" to 2"

MANUFACTURER

Ford Meter Box Company, Inc.
Mueller Co.
AY McDonald Manufacturing Co.

MODEL #

B-11 & B-41 Series
B-20200
6101W

REVISION DATE

07/09/18

ITEM

CURB STOP, BALL VALVE

PAGE

W-21

Curb Stop, Ball Valve

City of Green Cove Springs

Approved Materials



DESCRIPTION:

Tapping Sleeve, stainless steel band with stainless steel threaded outlet (NPT).

SIZE

3/4" to 2"

MANUFACTURER

Ford Meter Box Company, Inc.
Romac Industries
Smith-Blair, Inc.
PowerSeal Pipeline Product Corp.

TPS

MODEL #

FS313
306
372
3412 AS
3414 AS
T3 Series

Tapping Sleeve

REVISION DATE

07/09/18

ITEM

TAPPING SLEEVE

PAGE

W-22

City of Green Cove Springs

Approved Materials



Fire Hydrant

DESCRIPTION:

Fire hydrants shall open to the left and shall be equipped with the following items: all bolts, nuts, and washers shall be stainless steel 304 or 316 grade, assembled with anti-seize compound; breakaway coupling should be bronze, cast iron/ductile iron; all pins, bolts, or clips shall be stainless steel 304 or 316 grade; upper and lower stems shall be stainless steel 316 grade or 400 grade; main valve seat shall be EPDM rubber and shall be marked as such and shall be assembled in such a fashion the rubber cannot separate from the metal; all coatings shall be NSF approved. Fire hydrant shall be painted Red with white Top and have 1-1/2" penta nuts opening left. Caps shall be attached with stainless steel chain, including swivel ring. Paint shall be silver, BLP Mobile Paints, liquid aluminum, 1151 ALKYD weight 56.6% x volume 41.2%, VOC 3.76 lb/gal.

SIZE

5-1/4"

MANUFACTURER

American-Darling

MODEL

B-84-B-5

To Ensure Standardization of utility, The City of Green Cove Springs uses only one model fire hydrant.

REVISION DATE

07/09/18

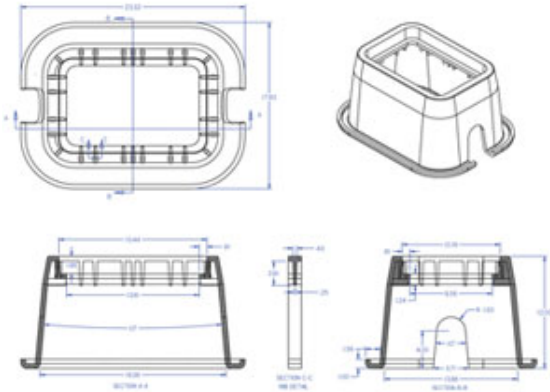
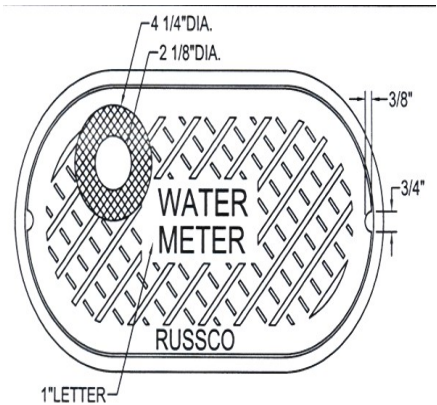
ITEM

FIRE HYDRANT

PAGE

W-23

City of Green Cove Springs
Approved Materials



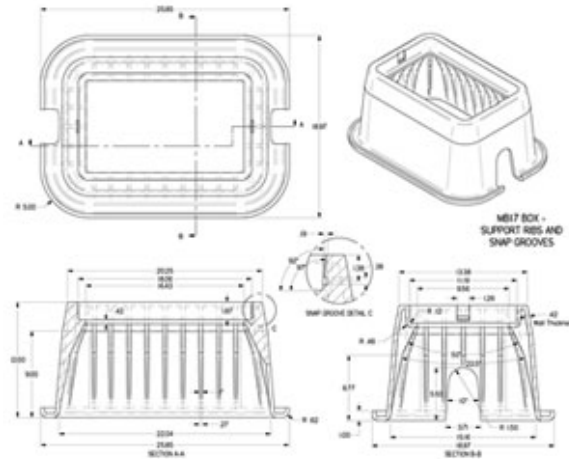
NOTE: For meters under 1" and flushing hydrants.

DESCRIPTION:
Oval Cast Iron Meter Box for residential meters, and flushing hydrants with "WATER" identification cast in the lid. Rome meter box lid with touch read hole.
Rectangular Polyethylene Meter Box for residential or commercial meters and flushing hydrants with "Water" identification cast in the lid, including a touch read hole in the lid.

SIZE	MANUFACTURER	MODEL #
10" x 19" x 10"	SigmaCorp/Russell	Rome 1910 Box MB282T Lid MB2821T
Varies 18" x 13" x 12"	Southeastern Distributors, Inc. DFW Plastics, Inc.	MB-16-17-18 DFW36C-12-3T

City of Green Cove Springs

Approved Materials



DESCRIPTION:

Rectangular Cast Iron Meter box for 3/4"-1" Meter with "WATER METER" identification cast into the lid.

Rectangular Polyethylene Meter Box for residential or commercial meters and flushing hydrants with "Water" identification in the lid. Lid shall be blue in color.

SIZE

13-3/8" x 20 1/4" x 12"

14" x 21" x 12"

21-13/16"x19-11/16"x12"

MANUFACTURER

Southeastern Distributors, Inc.

DFW Plastics, Inc.

SIGMA

MODEL

MB-17

DFW37C-12-3T

RMB 111812 NSW

Meter Box, 3/4" - 1" Meter

REVISION DATE

01/06/15

ITEM

METER BOX, 1" METER

PAGE

W-25

City of Green Cove Springs

Approved Materials



DESCRIPTION:

Rectangular Heavy Duty Meter Box for 1-1/2" and 2" Meters, with "WATER METER" identification cast into or welded onto the lid, including a touch read hole in the lid. Traffic rated lid shall have 3" port for meter reading.

SIZE

34-3/4" x 21-3/4"X12"
34-3/4"x 20-3/4"x12"
30" x 17" x 12"

MANUFACTURER

Brooks Products
Brooks Products
Southern Meter Box, Inc.
Southern Meter Box, Inc.
DFW Plastics, Inc.

MODEL #

66 (Box)
66-TR (Lid)
C.H. 2" (Box)
T-T.R. 2" (Lid)
DFW1730C-12-3T

REVISION DATE

07/09/18

ITEM

METER BOX, 1-1/2" & 2" METERS

PAGE

W-26

Meter Box, 1-1/2" & 2" Meters

City of Green Cove Springs
Approved Materials



DESCRIPTION:
All Solvent Welded Fittings, Schedule 80

SIZE
2" and smaller

MANUFACTURER
Lasco Fluid Distribution Products

MODEL #
N/A

City of Green Cove Springs

Approved Materials



DESCRIPTION:

Air Release Valve for Water Distribution Main

SIZE

Varies

MANUFACTURER

Val Matic
Val Matic
Crispin
Crispin
Crispin
APCO
G.A. Industries
G.A. Industries
G.A. Industries
Val Matic

MODEL #

VMC-202C
38
PL10
PL10A
L20
200A
905
910
920
25

Air Release Valve

REVISION DATE

07/09/18

ITEM

AIR RELEASE VALVE

PAGE

W-28

City of Green Cove Springs

Approved Materials



DESCRIPTION:

Casing Spacer, Poly or stainless steel center line type. Poly spaced at 3 L.F. maximum on center, or closer if recommended by manufacturer. Stainless steel spaced at 6 L.F. on center, or closer if recommended by manufacturer. Casing Spacer shall not be less than 1/4" or more than 1/2" from top of casing. Casing Spacer shall have 6 runners equally spaced at 60° intervals around the spacer, for pipe sizes 4" through 16". Casing Spacer shall have 8 runners equally spaced at 45° intervals around spacer, for pipe sizes 18" through 36". All spacers for pipe 36" and larger require a separate submittal for GCS review and approval. The distance between spacers for 36" pipe and larger will be determined by GCS, depending on the type of pipe to be installed.

SIZE

4" thru 16"
18" thru 36"
4" thru 12"
8" thru 12"
14" thru 36"
8" thru 12"
4" thru 16"

MANUFACTURER

The BWM Co.
The BWM Co.
The BWM Co.
Advanced Products & Systems, Inc.
Advanced Products & Systems, Inc.
Pipeline Seal & Insulator, Inc. (PSI)
RACI Spacers North America, Inc.

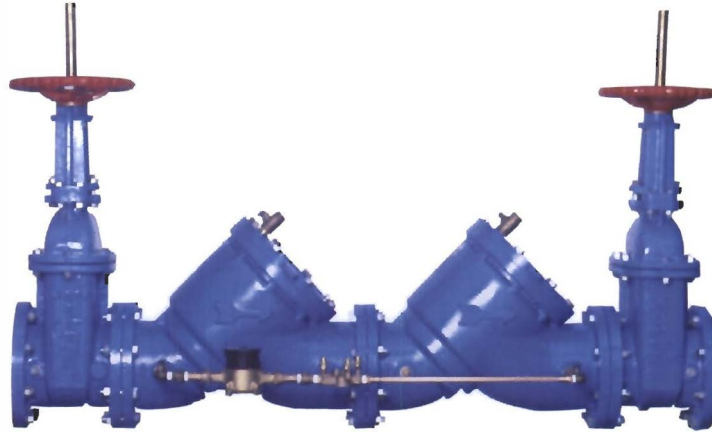
MODEL #

BWM-SS (6 Legs @ 60°)
BWM-SS (8 Legs @ 45°)
KP Poly (2 pc. w/ 6 Legs)
(Stainless Steel only)
(Poly)
(Stainless Steel only)
F/G, P/Q, M/N

Casing Spacer

City of Green Cove Springs

Approved Materials



DESCRIPTION:

Double Check Detector Valve Assembly with ¾" by-pass meter, for fire system installations.

NOTE:

The approved materials listed below are for installations owned by GCS. Installations not owned by GCS shall utilize a backflow preventer which complies with the D.E.P. requirements.

SIZE

2 ½" TO 10"

MANUFACTURER

Watts Industries

Febco

Hersey/Grinnell (Grinnell Mechanical Products)

Wilkins Division/Zurn Industries, Inc.

Wilkins Division/Zurn Industries, Inc.

Wilkins Division/Zurn Industries, Inc.

MODEL #

709 DCDA

856

DDC-II

950DA

450DA

350DA

REVISION DATE

07/09/18

ITEM

DOUBLE CHECK DETECTOR
VALVE ASSEMBLY, FIRE SYSTEM

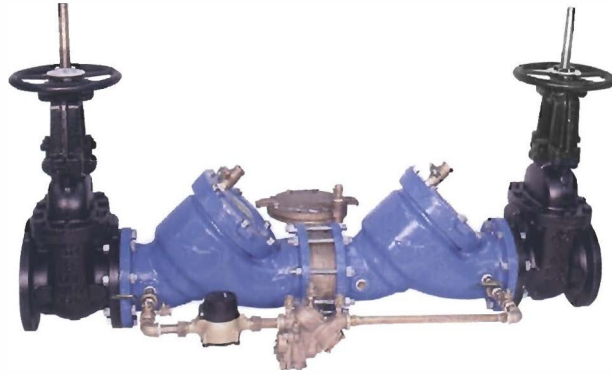
PAGE

W-30

Double Check Detector Valve Assembly

City of Green Cove Springs

Approved Materials



DESCRIPTION:

Reduced Pressure Backflow Preventer for system with flow meter upstream and no by-pass meter required.

NOTE:

The approved materials listed below are for installations owned by GCS. Installations not owned by GCS shall utilize a backflow preventer which complies with the D.E.P. requirements.

SIZE

2 ½" TO 10"

MANUFACTURER

Wilkins Division/Zurn Industries, Inc.
Watts Industries
Febco
Hersey/Grinnell

MODEL #

975
Series 909
825Y
6CM

REVISION DATE

07/09/18

ITEM

REDUCED PRESSURE BACKFLOW
PREVENTER ASSEMBLY

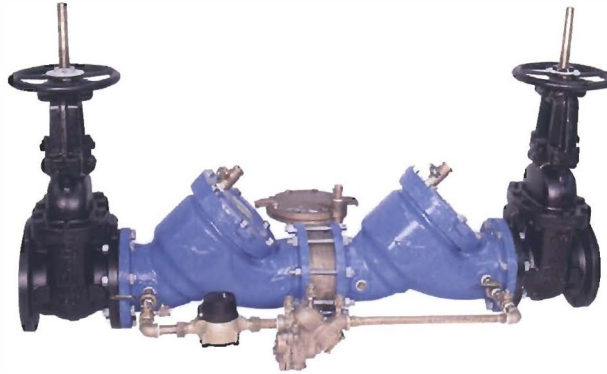
PAGE

W-31

Reduced Pressure Backflow Preventer

City of Green Cove Springs

Approved Materials



DESCRIPTION:

Reduced Pressure Zone Backflow Preventer for commercial service, commercial and residential irrigation and other areas where contamination is present and could gain entrance into the water supply system.

NOTE:

The approved materials listed below are for installations owned by GCS. Installations not owned by GCS shall utilize a backflow preventer which complies with the D.E.P. requirements.

SIZE

Varies

MANUFACTURER

Wilkins Division/Zurn Industries, Inc.
Wilkins Division/Zurn Industries, Inc.
Febco
Febco
Watts Industries

MODEL #

375 or 975 2 ½" to 10"
975XL ¾" to 2"
860 2 ½" to 10"
825Y ¾" to 2"
Series 909

REVISION DATE

07/09/18

ITEM

RPZ BACKFLOW PREVENTER

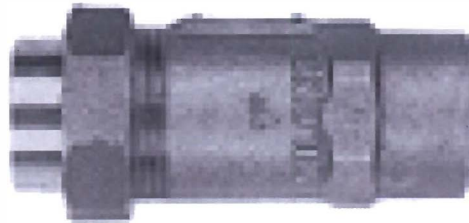
PAGE

W-32

RPZ Backflow Preventer

City of Green Cove Springs

Approved Materials



DESCRIPTION:

Inline Dual Check Valves for residential service only. All must have a Female Inlet Threaded Fitting and a Male Outlet Threaded Fitting.

SIZE

Varies

MANUFACTURER

Wilkins Divisions/Zurn Industries, Inc.
Watts Industries
Febco

MODEL #

700
7F
810

Inline Check Valves, Residential

REVISION DATE

07/09/18

ITEM

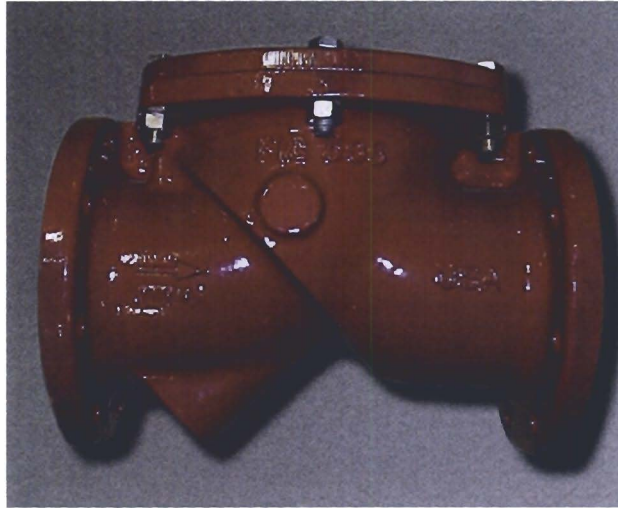
INLINE CHECK VALVES, RESIDENTIAL

PAGE

W-33

City of Green Cove Springs

Approved Materials



DESCRIPTION:

Ken-Flex Resilient Hinge In-Line Check Valve. All valves shall have stainless steel bolts and nuts installed on the top access plate and the flanged ends. All valves shall be installed with a ductile iron Mechanical Joint by Flanged End Adapter to make the connection to PVC or ductile iron pipe, and shall include all necessary restraining devices to meet GCS pipe restraint details and specifications.

SIZE

4" through 12"
4" through 12"

MANUFACTURER

Kennedy Valve
American Flow Control
Mueller Company

MODEL #

FIG-506
2100
Flexible Disc

Inline Check Valves

REVISION DATE

07/09/18

ITEM

INLINE CHECK VALVES

PAGE

W-34

City of Green Cove Springs

Approved Materials



DESCRIPTION:

Water Meter, Compound Type, low flow registration with low head loss at high flows meeting AWWA C-701. Meter to be installed with stainless steel strainer, as recommended by manufacturer. Meter to be installed with AMR equipment in place.

SIZE

3" and larger

MANUFACTURER

Neptune (Precision Meters)
with Stainless Steel Strainer

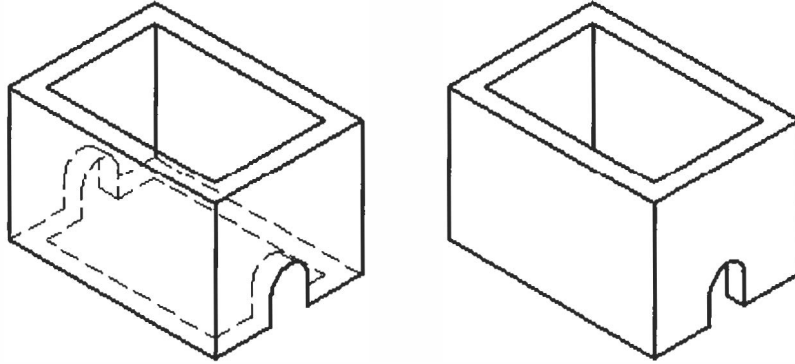
MODEL #

Tru/Flo Series
Compound
Meter

Water Meter, Turbine

City of Green Cove Springs

Approved Materials



Notes:

1. All pipe to be Ductile Iron.
2. All valves and fittings to be ductile iron.
3. Minimum length of 8 diameters of straight pipe to be installed on inlet side of meter.
4. All pipe and fittings to be same size as meter or larger.
5. Concrete box shall be 42" deep with open bottom, precast with notch to accommodate pipe installed 36" deep, installed on 12" of #57 stone.
6. Contractor shall provide shop drawing of box with dimensions for approval by GCS.
7. The cost of the meter will be assessed to developer under separate agreement. The meter only will be furnished to the contractor by GCS and the contractor shall install the meter.

DESCRIPTION:

Precast meter vault for large meters, 3" and above.

SIZE

As required

MANUFACTURER

Hanson Pipe & Products
Standard Precast
or approved equal

MODEL #

N/A
N/A

REVISION DATE
07/09/18

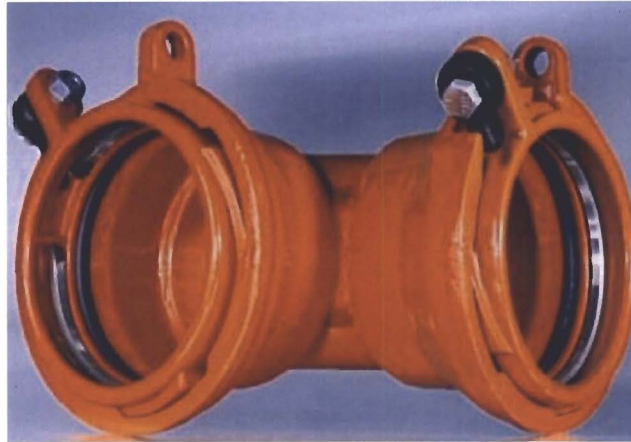
ITEM
**PRECAST METER VAULT
FOR LARGE METER**

PAGE
W-36

Precast Meter Vault for Large Meter

City of Green Cove Springs

Approved Materials



DESCRIPTION:

One Bolt Self Restraining Ductile Iron Epoxy Coated Fittings with 304 SS Retainer and O-Ring Gasket.

SIZE

4" through 12"

MANUFACTURER

One Bolt, Inc.

MODEL

N/A

REVISION DATE

07/09/18

ITEM

DUCTILE IRON ONE BOLT FITTING

PAGE

W-37

Ductile Iron One Bolt Fitting

City of Green Cove Springs

Approved Materials



DESCRIPTION:

Mechanical Joint Restrainer Gland. For PVC pipe only.

SIZE

4" through 24"

MANUFACTURER

Ford Meter Box Company
Ford Meter Box Company
Ford Meter Box Company
Star Pipe Products
Ebaa Iron, Inc.
Tyler Union
Tyler Union
Tyler Union
Smith & Blair
SIP Industries

MODEL #

Uni-Flange Series 1500 S (IPS)
Uni-Flange Series 1500 C (PVC)
UFR1500 (PVC)
Series 4000
Series 2000 (PV)
Series 1500 (Dual Wedge)
Series 2000
Series 3000
Cam-Lock 120
EZPVCP08

REVISION DATE

07/09/18

ITEM

MECHANICAL JOINT RESTRAINER GLAND

PAGE

W-38

Mechanical Joint Restrainer Gland

City of Green Cove Springs

Approved Materials



DESCRIPTION:

Heavy Body Ductile Iron Resilient Seated Gate Valve. All valves shall open by turning to the left and shall be equipped with a 2" square operating nut. All valves shall have NPT threaded female ends. All valves shall have a 250 PSI working pressure. All valves shall have 3/6 SS gland bolts, 316 SS stem, cast iron or a brass wedge, fully encapsulated w/ EPDM rubber, fusion-bonded epoxy coating meeting or exceeding AWWA C550. Valves shall be tested to AWWA C509 standards.

SIZE

1" - 3"

MANUFACTURER

AVK

MODEL #

Series 03

REVISION DATE

07/09/18

ITEM

DUCTILE IRON GATE VALVE

PAGE

W-39

Resilient Seated Gate Valve - Heavy Duty

City of Green Cove Springs

Approved Materials



Tracer Wire

DESCRIPTION:

Tracer wire for Horizontal Directional Drilling Installation shall be a 8 gauge solid, Pro-Trace HD-CCS PE45. Tracer Wire shall be copper clad steel conductor with a minimum break load of 2,150 lbs (or 165,800 psi) and shall be extruded with a 45 mil. HDPE coating. The coating shall be of the proper color to meet the APWA color code of the buried utility line. Tracer wire shall meet the specs as that of Pro-Line Safety Products. 8 AWG Solid Pro-Trace HD CCS PE45, Hard Drawn, 21% IACS conductivity, copper clad steel, break load of 2,150 LBS, 45 Mil HDPE coating, 30 Volts and ROHS compliant, Pro-Trace or approved equal.

Tracer wire for open-trench direct bury shall be a 12 gauge solid, Pro-Trace HF-CCS PE30. Tracer wire shall meet the specs as that of Pro-line SafetyProducts. 10 AWG Solid Pro-Trace HF-CCS PE30, consist of a dead soft annealed, 21%IACS conductivity, copper clad steel conductor, break load of 448 LBS (or 55,000 PSI), with a 30 mil HDPE coating, 30 volts and ROHS compliant, the coating shall be of the proper color to meet the APWA color code of the buried utility line, Pro-Trace or approved equal.

SIZE

MANUFACTURER

MODEL #

DIRECTIONAL DRILLING ONLY

8 Gauge	Pro-Line Safety Products	HD-CCS PE 45
8 Gauge	Copperhead	845-EHS

DIRECT BURY ONLY (NON-HORIZONTAL DIRECTIONAL DRILLING)

12 Gauge	Pro-line SafetyProducts	HF-CCS PE 30
12 Gauge	Copperhead	1030 SF

ITEM

TRACER WIRE

PAGE

W-40

City of Green Cove Springs

Approved Materials



DESCRIPTION:

Tracer Wire Box shall be designed to be easily detected by magnetic and electronic locators even when box is covered by a minimum of four (4) inches of soil, sod and / or paving material.

- * Where utility mains are to be installed beneath sidewalk, Tyler Union (461-S) valve boxes shall be installed instead of locate wire boxes.

SIZE

MANUFACTURER

MODEL #

Copperhead
Sigma Corp./Russell

Snake Pit
Rome 1910
Box MB282T
Lid MB2821T
Snake Pit
461S

Copperhead
Tyler Union

Tracer Wire Box

City of Green Cove Springs

Approved Materials



DESCRIPTION:

Tubing shall be manufactured of PE 4710, High Density Polyethylene (HDPE), in accordance with AWWA C901, ASTM D1248, ASTM D2239, ASTM D2737 and ASTM D3350. The tubing shall have a minimum working pressure of 250 PSI. Polyethylene tubing shall be copper tube size SDR-9 and shall be colored blue. HDPE pipe shall have ultraviolet (UV) inhibitors for protection against direct sunlight for 1 year. Inserts for polyethylene tubing may be utilized, at contractor's option, and if used, shall be 316 stainless steel. The use of no-lead brass couplings, tees and "Y" fittings are acceptable on poly service tubing, if not located under the roadway. Tubing shall be approved with potable water by the National Sanitation Foundation (NSF-14) and shall be continuously marked at intervals of not more than four feet with the nominal size, pressure rating, NSF seal, Manufacturer's name and trademark, Standard dimension ratio and ASTM specification.

SIZE

2" and smaller

MANUFACTURER

ENDOT Industries, Inc.
Rehau
ADS

MODEL #

REVISION DATE

07/09/18

ITEM

POLYETHYLENE TUBING

PAGE

W-42

Polyethylene Tubing

City of Green Cove Springs

Approved Materials



DESCRIPTION:

Brass Adapter & Coupler for polyethylene pipe shall be no-lead brass conforming to AWWA C800 and shall be female IPS, pack joint or compression nut.

SIZE

2" and smaller

MANUFACTURER

Ford Meter Box Company, Inc.
McDonald
Mueller
James Jones
Cambridge Brass

MODEL #

Brass Adapter & Coupler

REVISION DATE

07/09/18

ITEM

BRASS ADAPTER & COUPLER

PAGE

W-43

City of Green Cove Springs

Approved Materials



Note: Select desired saddle O.D. range which specifically matches outside diameter of pipe. Saddles for C-900 shall be sized to the exact O.D. size for proper fit. Single Strap Saddle is approved for new 1-inch water services only which are installed on dry water main, sized 4-inch through 10-inch.

DESCRIPTION:

Service Saddle shall be epoxy or poly coated with single stainless steel straps. Service saddles shall include stainless steel bands with either 3 mil thickness (minimum) epoxy or poly coated (malleable or ductile) iron body or 85 – 5 – 5 – 5 bronze body. Single band saddles may be utilized on new 1 inch water services which are installed on a dry 10 inch size or smaller water main. For wet taps or water mains 12 inch size and larger, a double band saddle is required. Outlet sizes shall be 1 inch through 2 inches and have iron pipe threads (IPS). The outside diameter range of the saddle shall be properly sized to conform to the type of pipe being tapped without placing undue stress on the pipe. Pipe shavings or cuttings, including coupon, shall not enter the host pipe during the tapping operation.

SIZE

1" and smaller

MANUFACTURER

Ford Meter Box Company, Inc.
Romac Industries, Inc.
Smith-Blair, Inc.
JCM Industries (new construction only)
PowerSeal Pipeline Products Corp.
Mueller Company

MODEL #

FC-101
101 NS
315
405
3417, 3409
DR1S

REVISION DATE

07/09/18

ITEM

SERVICE SADDLE-SINGLE STRAP

PAGE

W-44

Service Saddle-Single Strap

City of Green Cove Springs

Approved Materials



Note: Select desired saddle O.D. range which specifically matches outside diameter of pipe. Saddles for C-900 shall be sized to the exact O.D. size for proper fit. A double strap saddle will be required for all wet taps and are acceptable for installation on dry water supply mains (all sizes).

DESCRIPTION:

Service Saddle shall be epoxy or poly coated with stainless steel straps. Service saddles shall include stainless steel bands with either 3 mil thickness (minimum) epoxy or poly coated (malleable or ductile) iron body or 85 – 5 – 5 – 5 bronze body. For wet taps or water mains 12 inch size and larger, a double band saddle is required. Outlet sizes shall be 1 inch through 2 inches and have iron pipe threads (IPS). The outside diameter range of the saddle shall be properly sized to conform to the type of pipe being tapped without placing undue stress on the pipe. Pipe shavings or cuttings, including coupon, shall not enter the host pipe during the tapping operation.

SIZE

2" and smaller

MANUFACTURER

Ford Meter Box Company, Inc.
Romac Industries, Inc.
Smith-Blair, Inc.
JCM Industries (new construction only)
PowerSeal Pipeline Products Corp.
Mueller Company
TPS

MODEL #

FC-202, 202BS
202 DS(Dual)
317
406
3417, 3409
DR 25
Wide Range

Service Saddle-Double Strap

REVISION DATE

07/09/18

ITEM

SERVICE SADDLE-DOUBLE STRAP

PAGE

W-45